

SHOWMAN EXTREME

GOOSENECK



Sundowner Trailers' Showman Extreme is the most stylish and functional trailer available to showmen and breeders. Along with a 7'6" width it has a rear roof spoiler with lights, is fully lined and insulated plus wired for air conditioning. It has a long list of user friendly features that makes hauling livestock a pleasure. Do more than show in style, haul in style with a Sundowner Showman Extreme. Customize yours "the way you want it."

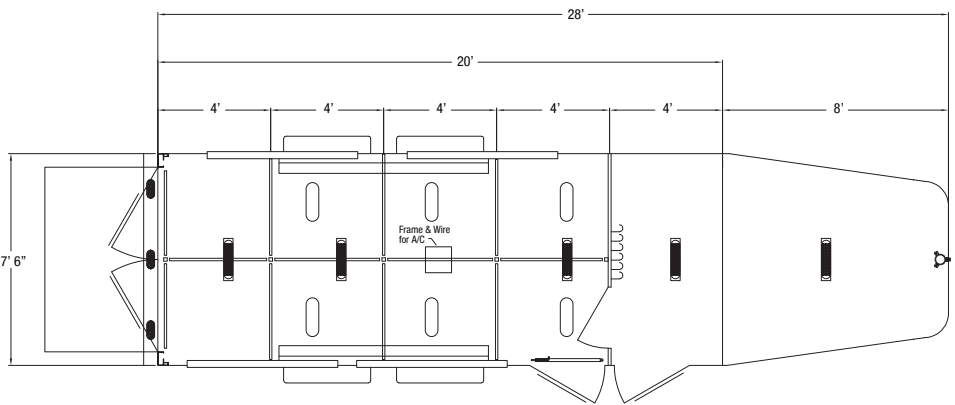
STANDARD FEATURES

- 2 5/16" Gooseneck hitch, adjustable
- 7'6" Wide
- 6' Tall
- 20' or 24' Long
- All aluminum construction
- All aluminum floor
- Prepainted aluminum skin
- Raised nose
- Fully lined and insulated
- Rear roof spoiler w/3 lights
- 4.25" Upper and lower vector trim
- Painted steel pens
- 50/50 Removable pens
- 8 Pens on a 20' model and 10 pens on a 24' model
- 2 Feeder rods per pen
- 3-18" LED lights, flush mounted in stock area of 20' model and 4 in 24' model
- Side access door with butterfly latch, locking hasp, low profile slideout step
- 6 Bi-directional vents on 20' and 8 on 24' model
- Steel pen gate across side access door
- Center access door
- 2 Drop down windows on each side of stock area
- Double rear doors with sliding windows, butterfly latch and locking hasp on both
- 2-110 Outlets in stock area
- Rear ramp
- 4 Tail lights
- LED Clearance lights
- Framed and wired for AC in stock area

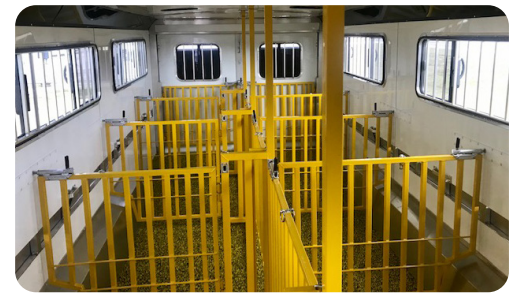
- Aluminum wheels
- Rubber torsion axles
- 4 Wheel electric brakes with safety breakaway
- Drop leg jack
- 4' Straight wall tack room
- Smooth skin
- Locking tack door with window and low profile slideout step
- 2 - 18" LED lights
- Converter
- Single battery box
- 6 Tack hooks
- 4 Feeder rods spaced on tack wall
- Brush tray on door
- Rubber floor mats
- Spare Tire

POPULAR OPTIONS

- Skin colors: white, black, silver, charcoal, champagne
- Custom colors
- Convertible pens
- Aluminum pens
- Stainless steel skin
- Additional height
- Additional width, 8'
- Additional length
- Additional pens
- Additional lighting
- Generator
- Air conditioner
- Water system
- Mister system
- WERM flooring
- Double deck system



6, 8, 10 and 12 pen models available



All dimensions are approximate. Photos may show options. Due to constant product improvements, specifications, component parts, standard and optional equipment are subject to change without notice or obligation. Refer to standard and special features for specifics. See your dealer for warranty details. 2021 © Sundowner Trailers, Inc. (7-27-21)

SUNDOWNER TRAILERS, INC.

9805 OK Highway 48 South • Coleman, Oklahoma 73432-8523

800-438-4294 • sundownertrailer.com